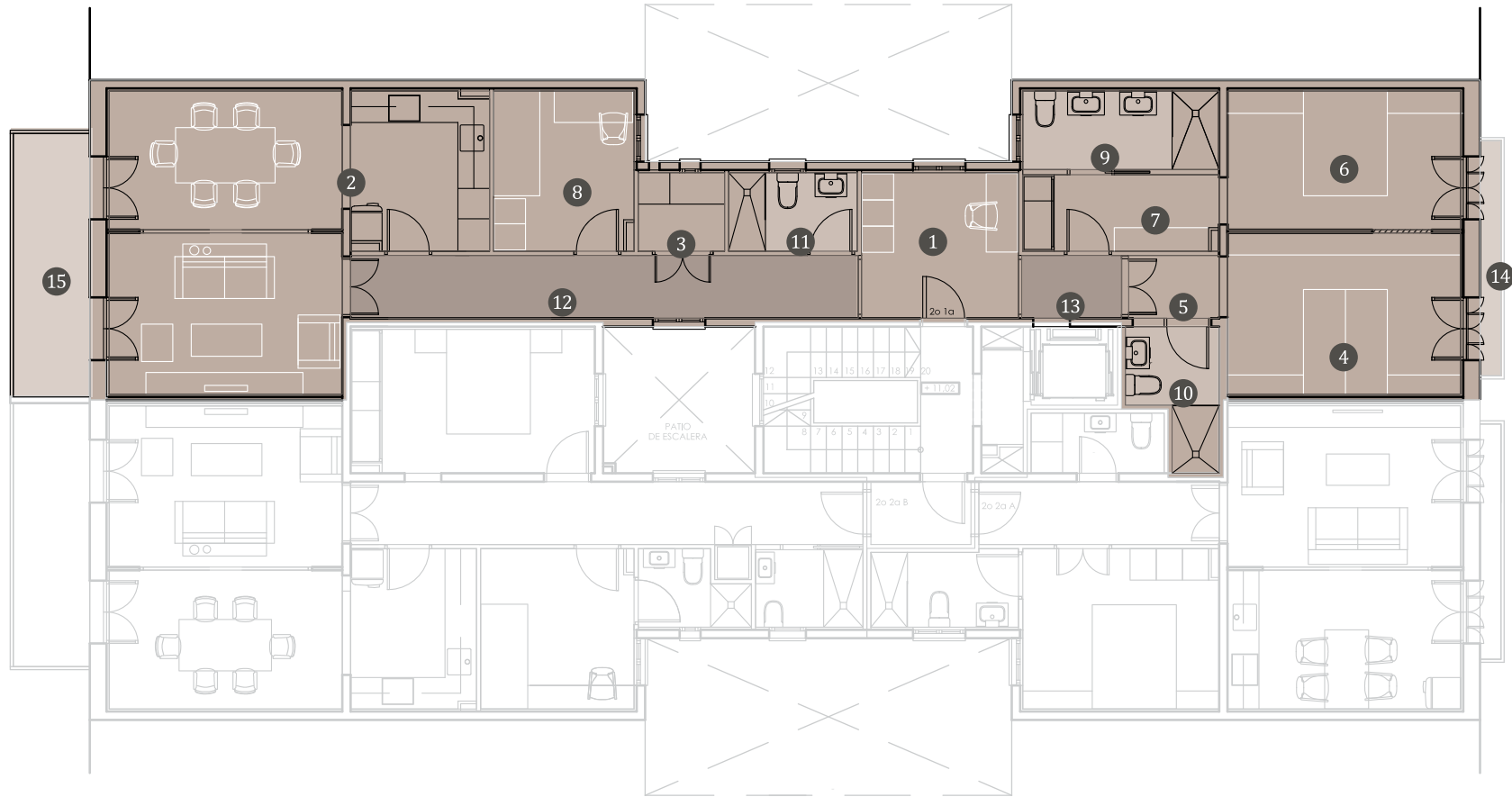


3-BEDROOM APARTMENTS



1 LOBBY	8.35m ²
2 LIVING/DINING ROOM AND KITCHEN	33.60m ²
3 UTILITY ROOM	2.45m ²
4 BEDROOM 1	13.70m ²
5 BEDROOM 1 HALL	2.05m ²

6 BEDROOM 2	11.80m ²
7 BEDROOM 2 HALL	5.45m ²
8 BEDROOM 3	8.20m ²
9 BATHROOM 1	5.60m ²
10 BATHROOM 2	3.85m ²

11 BATHROOM 3	3.70m ²
12 HALL 1	11.60m ²
13 HALL 2	2.30m ²
14 BALCONY OVERLOOKING C/BALMES	1.80m ²
15 BALCONY OVERLOOKING THE INTERIOR PATIO	7.40m ²